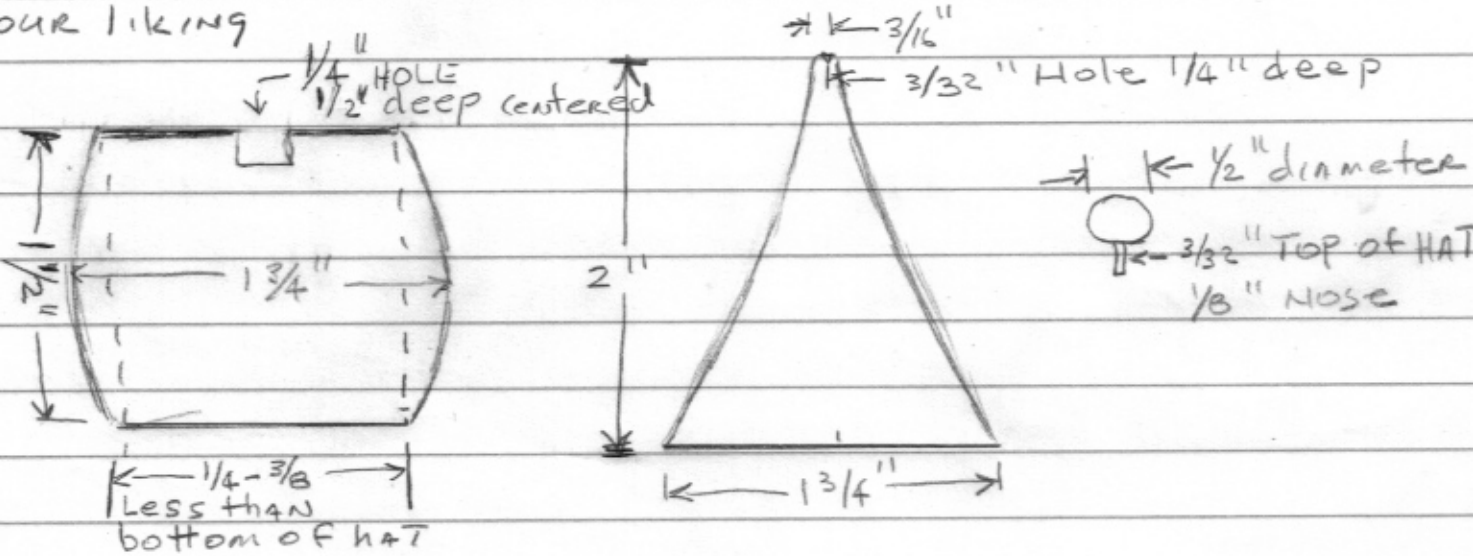


NVW GNOME Demo 11/6/2024

dimensions are not etched in stone adjust them to your liking



Body and top of hat ball are light colored wood such as maple

Hat and nose are contrasting colored wood such as walnut or cherry

What you need besides wood:

Aleen's quick set tacky glue

Gold elastic cord

Fake fur

} Available at
JOANN'S FABRIC

Thick CA (super glue) or hot melt glue

clear finish and or paint

Small screw eyes Lee Valley's smallest

Single edge RAZOR blade or X-actoknife Ace Hdw

Fake fur must be cut from the back with blade
NOT SCISSORS